

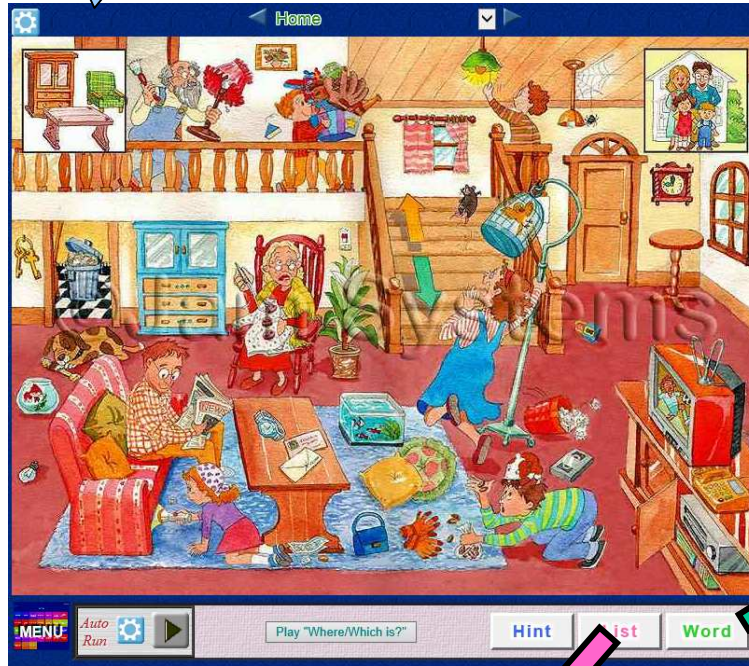
e-touch-web User's Guide

Jam Systems Inc.

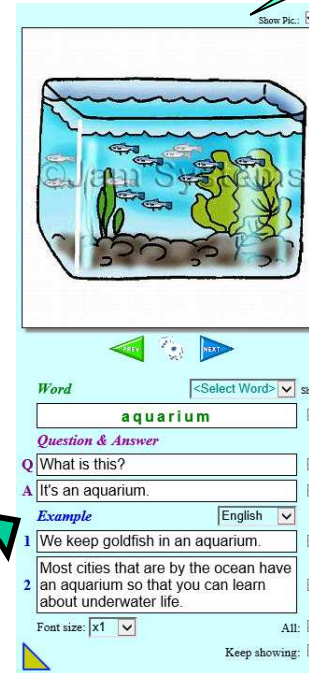
2015.3.12

Windows

Main Window



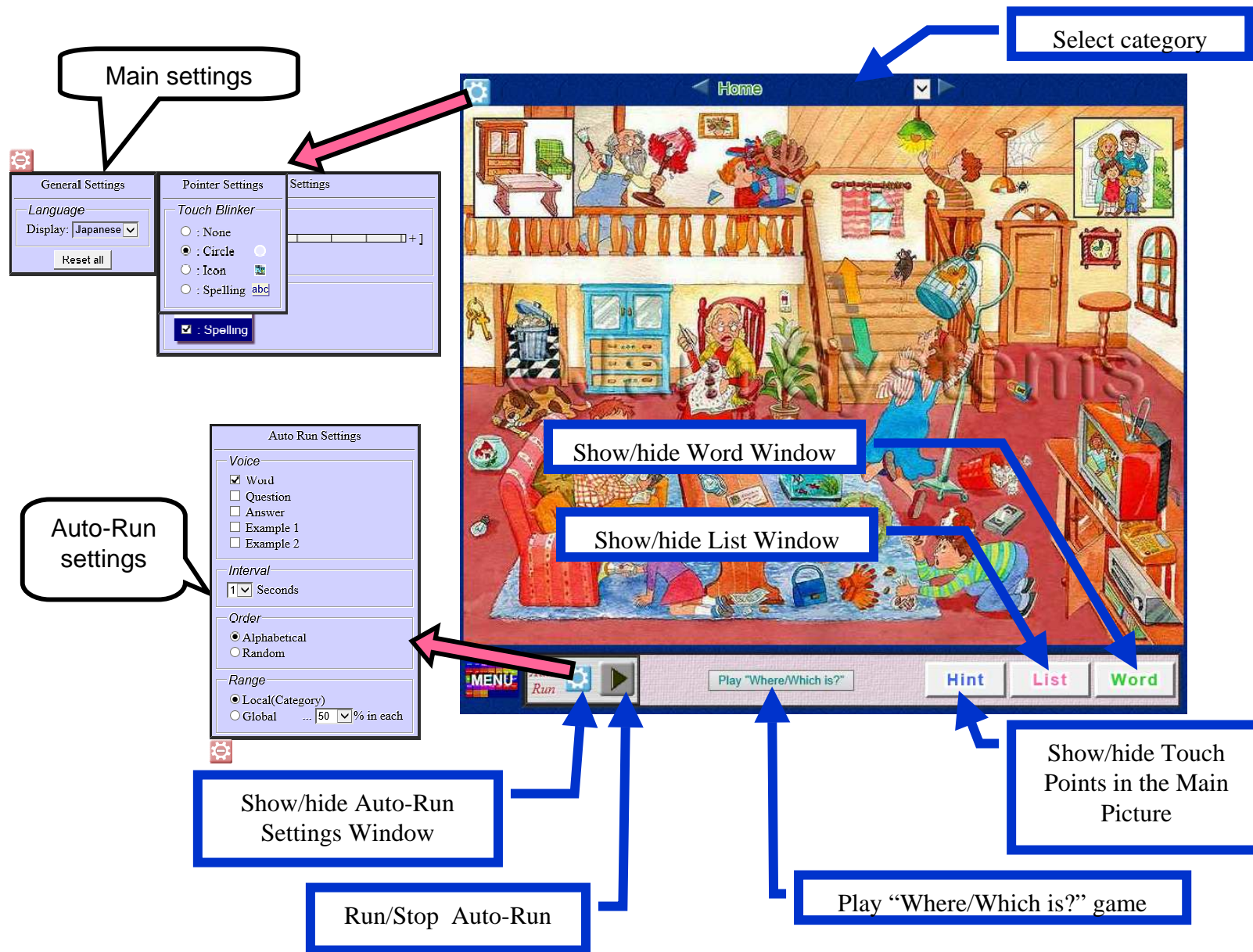
Word Window



List Window



Main Window



Word Window



Word Window interface showing an aquarium image, navigation buttons (PREV, NEXT), a word input field containing 'aquarium', and a 'Question & Answer' section with a question 'What is this?' and an answer 'It's an aquarium.' There are also 'Example' sentences, a font size selector, and checkboxes for 'All' and 'Keep showing'.

Show/hide picture

Picture of the word
Click here to show the location of the word in the main picture

Change word to previous/random/next alphabetically

Click the text-area to hear the voice.

Change language for Ex translation

Show/hide each text

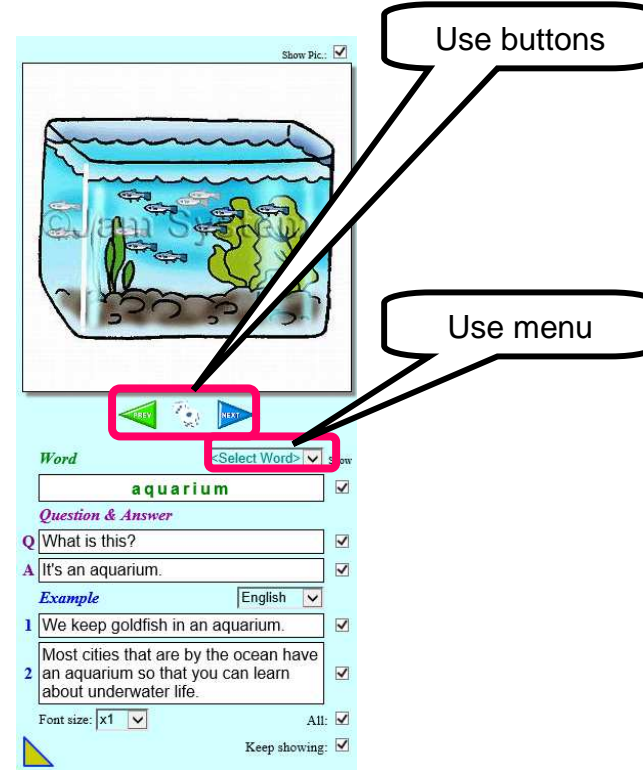
On/off all the show-checkboxes above at once

Do not turn off the show-checkboxes when word selection changes

Change font size

Move the word window to the bottom

Changing/choosing word



Moving Word Window

Home

Show Pic.:

Word: <Select Word> Show

Word: aquarium

Question & Answer

Q What is this?

A It's an aquarium.

Example: English

1 We keep goldfish in an aquarium.

2 Most cities that are by the ocean have an aquarium so that you can learn about underwater life.

Font size: All: Keep showing:

MENU Auto Run Play "Where/Which is?" Hint List Word

Show Pic.:

Word: <Select Word> Show

Word: aquarium

Question & Answer

Q What is this?

A It's an aquarium.

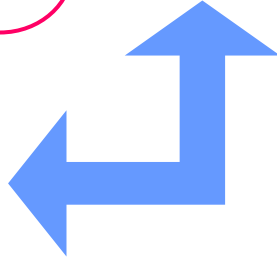
Example: English

1 We keep goldfish in an aquarium.

2 Most cities that are by the ocean have an aquarium so that you can learn about underwater life.

Font size: x1 All: Keep showing:

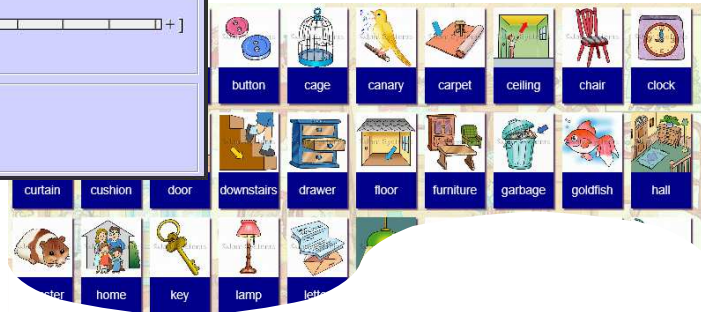
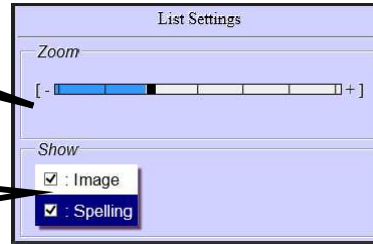
Click triangle to move the word window to the bottom/right



⚙️ Setting Panes

Zoom list icon

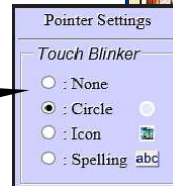
Choose items to show



Choose language



Choose one time blink icon



Run across categories (Not for touch panels)

Define % of number of items within each category

